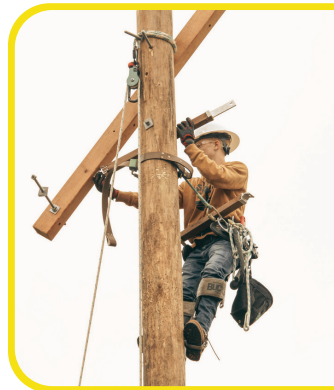
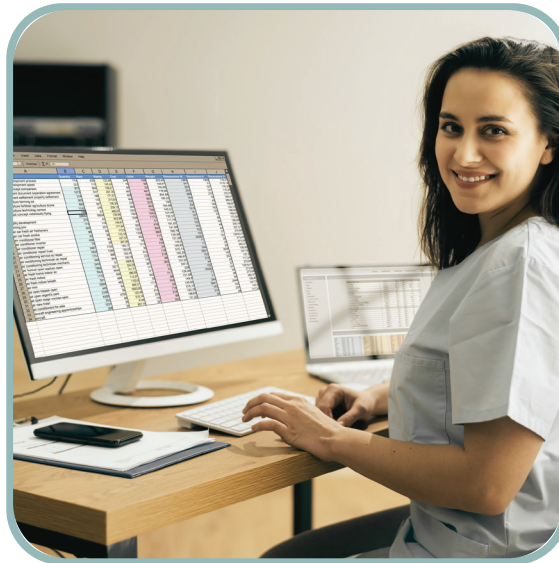


2024 FALL TRAINING GUIDE



PH.AUGUSOFT.NET





Workforce, Economic, and Community Development (WECD) offers workforce development courses, training and programs for the community, including custom designed programs for employers. We serve business and industry; individuals seeking employment, skills development, credentialing, or career training; and lifelong learners looking to enrich their lives. Continuing education may be in the form of credit or non-credit courses, online courses, or other formats such as workshops, assessments, and on-the-job training.

WECD provides oversight of the Dalton IDEA Center in Uptown Martinsville. The center is a one-stop entrepreneurial education and technology center, anchored by the Fab Lab.

If you are interested in a program or course listed in this catalog, or have a request for one that isn't, please contact us at (276) 656-0260 or wecd@patrickhenry.edu.

CONTENTS

3-4 BUSINESS & PROFESSIONAL DEVELOPMENT

4 COMPUTERS & TECHNOLOGY

4 CUSTOMIZED TRAINING

5-6 HEALTH & WELLNESS

7-10 INDUSTRY, TRADES & MANUFACTURING

10 ONLINE COURSES

11-12 INNOVATION & DESIGN

12 PERSONAL ENRICHMENT

13 TRANSPORTATION

14 CAREER CENTER

14 STAFF DIRECTORY

BACK REGISTRATION INFORMATION



**Get Skilled.
Get a Job.
Get Ahead.**

The G3 Program is a tuition assistance program for any Virginia resident who qualifies for in-state tuition and whose family income falls below an identified threshold. Eligible students may enroll in designated programs leading to jobs in high-demand fields.

INFORMATION: 276-656-0260



**THE SKILLS YOU NEED FOR THE
CAREER YOU WANT.**

FastForward is short-term training that leads to industry credentials based on the needs of local employers, which means students are in demand for skilled jobs when they graduate.

FastForward is helping Virginians get the jobs they want and the salaries they need. While funding lasts, students pay one-third or less on the cost of tuition on FastForward Programs.

FastForward programs take between 4 and 28 weeks to complete.

ASK ABOUT
RSVP

Find out today if you qualify!


INFORMATION:

276.656.0260

fastforward@patrickhenry.edu

**TUITION ASSISTANCE
FOR WORKFORCE PROGRAMS**

Grant funding and Scholarships may be available for eligible students.

Look for the 

INFORMATION: 276-656-0260

P&HCC AWARDED GRANT FUNDS FOR HEAVY EQUIPMENT OPERATOR PROGRAM EXPANSION

Patrick & Henry Community College has been awarded a \$176,267.00 grant from the Philip E. & Carole R. Ratcliffe Foundation to increase Heavy Equipment Operator (HEO) training programming by offering HEO courses in Patrick County.

“We are pleased to partner with Patrick & Henry Community College to provide resources for the Heavy Equipment Operator Training program in Patrick County that will equip individuals with technical skills to meet the labor demands for the statewide road expansion and improvement projects.” said Carlene Cassidy, CEO of the Ratcliffe Foundation. “Patrick & Henry CC has demonstrated a strong commitment to workforce training. We are confident that they will build on their current programs to set the next generation of learners up for success in their chosen fields and support the workforce needs of multiple employers throughout the region. Making education and skilled trades training accessible and supporting local business & industry are goals our founders wholeheartedly supported.”

P&HCC currently offers Heavy Equipment Operator training at its Manufacturing, Engineering and Technology (MET) Complex in Martinsville. With funding from the Ratcliffe Foundation, the college will expand its current programming to its satellite site in Patrick County to lessen the burden of transportation for students and to train future workers to serve on the large scale project currently underway on Route 58.

“Having access to a pipeline of workers prepared to work as equipment operators will be an asset on numerous projects throughout the state,” said Robbie Williams, Branch project executive, adding, “In particular, this training project will greatly assist with the current project underway to widen the road on Route 58 in Patrick County, Virginia as well as upcoming projects in the area.”

The Virginia Employment Commission shows that there are currently 10,015 individuals employed as construction equipment operators across the state. By 2030, this number is expected to grow to 10,894, a growth of nearly 10%. Because of job transfers and individuals retiring or switching professions, there are currently 1,180 openings posted for construction equipment operators annually. According to JobsEq data, operating engineers and other construction equipment operators earn an average of \$49,100 per year, with more experienced workers earning more than \$55,200 per year.

“With funding from the Ratcliffe Foundation, we will have the funds to purchase simulators that play a critical role in training



Michael Scales, P&HCC’s HEO instructor, guides a student through a simulator exercise.

students before they transition to practice on real life machinery. There are multiple benefits to training on simulators: learning on simulators reduces accidents by allowing students to train in a safe and relaxed environment, students can practice extreme situations and operations without risking injury or machine damage, producing and running a simulator leaves a minimal climate footprint compared to a traditional machine running on fossil fuels, and simulators allow students to gain more hours in the machine or vehicle regardless of season and weather,” said P&HCC Vice President for Workforce, Economic and Community Development Rhonda Hodges.

Interested students must first complete the National Center for Construction Education & Research (NCCER) Introductory Craft Skills program, which is a prerequisite course. NCCER Heavy Equipment Operator (HEO) Level 1 training covers a variety of critical skills for those working in the field including orientation to the trade, heavy equipment safety, identification of heavy equipment, basic operational techniques, utility tractors, introduction to earthmoving, grades, and vertical-mast sit-down counterbalance forklifts.

While uniquely aligned with the current road-widening project, the training prepares participants for a variety of positions within the construction trades industry that is in high-demand in P&HCC’s service region.

LUNCH & LEARN SERIES @THE MET

Join us for lunch and learn ways to sharpen your skills for more effective communication, greater productivity, and building stronger relationships for more cohesive teams and enhanced performance.

STRESS MANAGEMENT

This session will share multiple ways to manage stress associated with balancing a demanding schedule with personal and work life.

\$70

Thurs, Aug. 15 12:00-1:00 PM

BUILDING STRONGER TEAMS

In this session, participants will learn about the elements of teamwork with a focus on building stronger relationships and how to share information more efficiently and effectively across teams.

\$99

Thurs, Sept. 5 12:00-2:00 PM

GIVING AND RECEIVING CONSTRUCTIVE FEEDBACK

In this session, participants will learn how to plan a feedback session and give feedback in a constructive manner. Participants will gain knowledge about proven models to construct feedback objectively and effectively.

\$70

Thurs, Oct. 10 12:00-2:00 PM

STRENGTHENING PEOPLE SKILLS IN THE WORKPLACE

In this session, participants will learn techniques for strengthening people skills in the workplace.

\$70

Thurs, Nov. 7 12:00-2:00 PM

PREPARING AND DELIVERING EFFECTIVE PRESENTATIONS

In this session, participants will learn to prepare and deliver effective presentations.

\$70

Thurs, Nov. 21 12:00-1:00 PM

ENTREPRENEURIAL WORKSHOPS

Managing a small business can be challenging - let us help your business excel! Join us for our upcoming entrepreneurial workshops on topics critical for today's small business success.

THE ART OF STORYTELLING - STRATEGIES TO CREATE A POWERFUL NARRATIVE FOR YOUR BUSINESS

While marketing and advertising can sometimes be used interchangeably with business storytelling, we believe there are some significant distinctions. Whereas marketing and advertising can hyper focus on products and services, business storytelling is a much deeper dive into the heart of the business owner and the origin of the business.

Having a strong story for a business can assist with guiding an entrepreneur toward the right storytelling devices, while eliminating time and resource wasters. The Art of Storytelling - is an informative and interactive workshop that will remind participants why they started their businesses and how to effectively communicate why everyone should know about them!

\$49

Thurs, Sept. 24 5:30-7:30 PM

NATALIE HODGE DAVIS OF RUDY'S GIRL MEDIA
DALTON IDEA CENTER

TAKING YOUR SOCIAL MEDIA TO THE NEXT LEVEL

Explore ways to increase your brand and business presence in the virtual world and learn more about how to use the tools available to you to increase your customer base through positive social media engagement.

\$15

Thurs, Oct. 17 12:00-1:00 PM

DALTON IDEA CENTER

EXCEL FOR BUSINESS

In today's business environment, Microsoft Excel is an indispensable tool for professionals across various industries. This course is designed to provide participants with a comprehensive understanding of Excel's business applications. Whether you're a beginner or an intermediate user, this course will equip you with the skills and knowledge to efficiently and effectively use Excel to support your business tasks.

\$15

Tues, Nov. 19 11:30-1:30 PM

DALTON IDEA CENTER

PROFESSIONAL DEVELOPMENT

CUSTOMER SERVICE: FROM GOOD TO GREAT

Learn how to deliver exceptional service and WOW your customers.

\$60

ONLINE

8 hours/2 months to complete

UNCONSCIOUS BIAS

Learn to recognize and address biases for better decision-making, relationship building, and working more effectively in workplace environments.

\$60

ONLINE

3 hours/1 month to complete

DIVERSITY ACROSS THE GENERATIONS IN THE WORKPLACE

Discover how to effectively interact with team members differences for better working relationships and enhancing communication in the workplace.

\$60

ONLINE

4 hours/1 month to complete



COMPUTERS & TECHNOLOGY

USING TECHNOLOGY RESOURCES TO BUILD STRONGER TEAMS

Learn how technology can enhance workplace performance. This course will provide an overview of resources that enable the integration of your staff, content, and tools essential for greater engagement and effectiveness.

\$60

ONLINE

4 hours/1 month to complete

BASIC TO INTERMEDIATE EXCEL

This course equips the new user with the useful features of Excel and enables the transition to an intermediate level learning more advanced features.

\$60

ONLINE

10 hours/2 months to complete

We offer

CUSTOMIZED TRAINING *for employers*

Skilled employees represent the single greatest competitive advantage of any business. The Workforce Division of Patrick & Henry Community College can provide targeted, quality employee training and services to meet your organizational needs.

We provide:

- New Manager's Training
- DiSC® Assessments
- Teamwork and Communication
- Managing Multiple Generations in the Workplace
- Communication Skills for Managers
- Diversity, Equity & Inclusion
- Work of Leaders
- Microsoft Office Suite
- OSHA 10/ OSHA 30

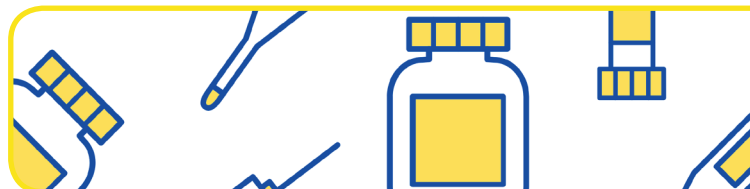
and a host of other trainings to meet your teams' specifications.

Training can be offered virtually, on our campus, or at your site.



To discuss training options for your team, contact:
smorrison@patrickhenry.edu or 276.656.5464

HEALTHCARE CAREERS



FastForward Credential

CERTIFIED PHLEBOTOMY TECHNICIAN

Prepare for a career as a Certified Phlebotomy Technician (CPT) in under six months. There is an increasing demand for phlebotomists in the healthcare field. Most employers seek, and many require, a professional certification. With a CPT certification, you will improve your marketability in a growing and rewarding field. Phlebotomy is often an excellent stepping-stone to other careers in healthcare, such as medical assisting.

This short-term training program introduces students to basic medical terminology, anatomy, physiology, components of health care delivery, and clinical laboratory structure. Students learn techniques of specimen collection, specimen handling, and patient interactions. Training also includes an additional 21 hours of online Job Readiness. High School diploma or GED required. Upon successful completion of the program and clinical, students will be eligible to sit for the National Healthcareer Association Phlebotomy Technician Exam.

Tuition includes: Textbook, supplies, CPR certification, and NHA prep package and assessment fee.

Additional cost to student: scrubs, TB test, and immunizations.

\$2,334 Full Price, **\$778 FastForward Price** 

Contact us for the next scheduled training at 276-656-0260 or fastforward@patrickhenry.edu.

FastForward Credential

NURSE AIDE TRAINING

Teaches basic care skills with emphasis on physical, social, emotional, and spiritual needs of patients. Covers procedures, communications and interpersonal relations; observations, charting and reporting; care planning, safety and infection control; anatomy and physiology, nutrition and patient feeding; ethics, death and dying. Prepares multi-skilled health care workers to care for patients of various ages with special emphasis on geriatric nursing, home health, and long and short-term care facilities.

Training also includes an additional 21 hours of Job Readiness. Students who meet strict attendance requirements and successfully complete the academic, lab, and clinical components will be eligible to apply for the Virginia Board of Nursing exam.

English requirement to be determined at advising session.

Tuition includes all instructional materials and program supplies (uniform/scrubs and clinical kit with stethoscope and manual blood pressure cuff, CNA textbooks, BLS textbook and workbook); CPR training, TB test fee, criminal/background testing, drug test; BLS and CNA credentialing exam fees.

Ask about RSVP!

\$3,495 Full Price, **\$1,165 FastForward Price** 

Contact us for the next scheduled training at 276-656-0260 or fastforward@patrickhenry.edu.

FastForward Credential

CERTIFIED CLINICAL MEDICAL ASSISTANT (CCMA)

This short-term training program prepares students for the National Healthcareer Association Certified Clinical Medical Assistant Exam. Certified Clinical Medical Assistants (CCMA) are multi-skilled healthcare practitioners competent in both clinical and administrative procedures. CCMA's interview patients, measure and record vital signs, prepare exam rooms, clean and sterilize medical equipment, and administer injections and topical and oral medications.

The CCMA program consists of CPR, CCMA lab, CCMA online instruction, and online job readiness. GED or HS diploma required. Tuition includes: Textbook, CPR certification, NHA online prep package and exam registration fee.

Ask about RSVP!

\$3,267 Full Price, **\$1,089 FastForward Price** 

Contact us for the next scheduled training at 276-656-0260 or fastforward@patrickhenry.edu.



FastForward Credential

CERTIFIED BILLING & CODING SPECIALIST

This short-term training program prepares students for the National Healthcareer Association's Certified Billing and Coding Specialist Exam. Individuals with a CBCS certification gain access to the knowledge and training they need to prepare for a rewarding and meaningful career as a sought-after Billing & Coding Specialist. Certified Billing and Coding Specialists keep the healthcare industry moving efficiently, making them critical and in-demand members of healthcare teams. As a CBCS, you may perform some or all of the following tasks:

- Gather/review essential patient information
- Verify required documentation before patient information is released
- Prevent fraud/abuse by auditing billing
- Support coding and billing process
- Assign codes for diagnoses and procedures
- Submit claims for reimbursement
- Coach healthcare providers to achieve optimal reimbursement

Prerequisite: GED or High School Diploma.
Potential Certifications: Upon successful completion of the program, students will be eligible to take the National Healthcareer Association's Certified Billing and Coding Specialist Exam.

[Ask about RSVP!](#) \$
\$3,099 Full Price, **\$1,033 FastForward Price**

Contact us for the next scheduled training at 276-656-0260 or fastforward@patrickhenry.edu.



FastForward Credential

CERTIFIED CLINICAL MEDICAL ASSISTANT (CCMA)

This short-term training program prepares students for the National Healthcareer Association Certified Clinical Medical Assistant Exam. Certified Clinical Medical Assistants (CCMA) are multi-skilled healthcare practitioners competent in both clinical and administrative procedures. CCMA's interview patients, measure and record vital signs, prepare exam rooms, clean and sterilize medical equipment, and administer injections and topical and oral medications.

The CCMA program consists of CPR, CCMA lab, CCMA online instruction, and online job readiness. GED or HS diploma required. Tuition includes: Textbook, CPR certification, NHA online prep package and exam registration fee.

[Ask about RSVP!](#) \$
\$3,267 Full Price, **\$1,089 FastForward Price**
Mon/Tues/Thurs, Aug. 26-Oct. 8 9:00 AM-4:00 PM
THE FRANKLIN CENTER

CERTIFIED PHLEBOTOMY TECHNICIAN

Prepare for a career as a Certified Phlebotomy Technician (CPT) in under six months. There is an increasing demand for phlebotomists in the healthcare field. Most employers seek, and many require, a professional certification. With a CPT certification, you will improve your marketability in a growing and rewarding field. Phlebotomy is often an excellent stepping-stone to other careers in healthcare, such as medical assisting.

This short-term training program introduces students to basic medical terminology, anatomy, physiology, components of health care delivery, and clinical laboratory structure. Students learn techniques of specimen collection, specimen handling, and patient interactions. Training also includes an additional 21 hours of online Job Readiness. High School diploma or GED required. Upon successful completion of the program and clinical, students will be eligible to sit for the National Healthcareer Association Phlebotomy Technician Exam.

Tuition includes: Textbook, supplies, CPR certification, and NHA prep package and assessment fee. Additional cost to student: scrubs, TB test, and immunizations.

[Ask about RSVP!](#) \$
\$2,334 Full Price, **\$778 FastForward Price**
Mon/Tues/Thurs, Oct. 21-Dec. 5 9:00 AM-4:00 PM
THE FRANKLIN CENTER

INDUSTRY, TRADES & MANUFACTURING



FastForward Credential

NCCER INTRODUCTORY CRAFT SKILLS: HYBRID

The NCCER Core Curriculum is a prerequisite to all other Level 1 craft curriculum. Its modules cover topics such as Basic Safety, Introduction to Construction Math, Introduction to Hand Tools, Introduction to Power Tools, Construction Drawings, Basic Communication Skills, Basic Employability Skills, and Materials Handling. Completing this curriculum gives the trainee the basic skills needed to continue education in any craft area the student chooses.

Textbooks also available in Spanish. Job Readiness required. HS diploma or GED not required.

[Ask about RSVP!](#)

\$1,098 Full Price, **\$366 FastForward Price** 

Contact us for the next scheduled training at 276-656-0260 or fastforward@patrickhenry.edu.

FastForward Credential

PLUMBING LEVEL 1

Most people are familiar with plumbers who come to their home to unclog a drain or install an appliance. In addition to these activities, plumbers install, maintain, and repair many different types of pipe systems. For example, some systems move water to a municipal water treatment plant and then to residential, commercial, and public buildings. Other systems dispose of waste, provide gas to stoves and furnaces, or supply air conditioning. Pipe systems in power plants carry the steam that powers huge turbines. Pipes also are used in manufacturing plants, such as wineries, to move material through production processes.

NCCER's Plumbing Level One curriculum covers the following topics: Introduction to the Plumbing Profession, Plumbing Safety, Tools of the Plumbing Trade, Introduction to Plumbing Math, Introduction to Plumbing Drawings, Plastic Pipe and Fittings, Copper Pipe and Fittings, Cast-Iron Pipe and Fittings, Carbon Steel Pipe and Fittings, Introduction to Plumbing Fixtures, Introduction to Drain, Waste, and Vent (DWV) Systems, and Introduction to Water Distribution Systems.

Prerequisite: Successful completion of NCCER Core - Introductory Craft Skills.

[Ask about RSVP!](#)

\$4,725 Full Price, **\$1,575 FastForward Price** 

Mon/Wed, Sept. 30-Dec. 11 6:00-9:00 PM

FastForward Credential

CARPENTRY LEVEL 1

Carpenters make up the largest building trades occupation in the industry and those with all-around skills are in high demand. Carpenters are involved in many different kinds of construction activities, from building highways and bridges to installing kitchen cabinets. Carpenters construct, erect, install, and repair structures and fixtures made from wood and other materials. This short-term training program prepares students for the National Center for Construction Education & Research (NCCER) Carpentry Level 1 Exam. Pre-requisite: NCCER Core - Introductory Craft Skills.

[Ask about RSVP!](#)

\$2,349 Full Price, **\$783 FastForward Price** 

Tues/Thurs, Oct. 8-Feb. 27, 2025 6:00-9:00 PM

HVAC LEVEL 1-HYBRID

The increasing development of HVAC (heating and air-conditioning systems) technology causes employers to recognize the importance of continuous education and keeping up to speed with the latest equipment and skills. Technical school training or apprenticeship programs often provide an advantage and a higher qualification for employment.

NCCER's program has been designed by highly qualified subject matter experts with this in mind. Our four levels, North American Technician Excellence (NATE) recognized, present theoretical and practical skills essential to your success as an HVAC installer or technician.

Upon successful completion of the program, students will be eligible to take the National Center for Construction Education & Research (NCCER) HVAC Level One Exam.

Students enrolled in the NCCER HVAC course can now get the Environmental Protection Agency (EPA) certification! With the successful completion of the course and credential, the additional EPA certification provides a competitive advantage in the labor market as it equips students with the essential knowledge of laws, regulations, and standards associated with refrigerant handling, thus reducing accidents and injuries. The EPA certification is nationally recognized across all states in the US.

Tuition includes cost of textbook, supplies, and NCCER HVAC Level One Exam registration fee.

Prerequisite: Successful completion of NCCER Core - Introductory Craft Skills.

[Ask about RSVP!](#)

\$4,095 Full Price, **\$1,365 FastForward Price** 

Mon & Wed, Oct. 7-Jan. 22, 2025 6:00-9:00 PM

HEAVY EQUIPMENT OPERATOR

Become a heavy equipment operator and earn an industry-recognized credential. The Heavy Equipment Operator program was developed to meet the growing employment demands for equipment operators.

This class serves as the first level of training in the Heavy Equipment Operator program. Students will learn the following content in a self-paced, web-based learning system: core craft skills, orientation to the trade, heavy equipment safety, identification of heavy equipment, basic operational techniques, utility tractors, introduction to earth moving, and interpreting civil drawings. At specified periods during the training, students attend scheduled sessions at a simulator training lab to perform simulator exercises for equipment basic controls, loading and unloading, excavating, and trenching. Students receive hands-on training in the lab with state-of-the-art simulators that replicate real-life operating scenarios through rotation-motion platforms and high-resolution 3-D displays for excavator and wheel loader equipment.

Prerequisite: Successful completion of NCCER Core - Introductory Craft Skills.

\$4,500 Full Price, **\$1,500 FastForward Price** 

Thurs, Dec. 5-April 17, 2025 6:00-10:00 PM



P&HCC STUDENTS & COMMUNITY ARE INVITED!

CAREER FAIR

AT PATRICK & HENRY COMMUNITY COLLEGE

THURSDAY, SEPTEMBER 26
10:00 AM-1:00 PM
P&HCC STONE HALL GYM

FOR MORE INFORMATION:
276-656-5483

 Patrick & Henry Community College

 VIRGINIA CAREER WORKS
WEST Piedmont REGION

This workforce event and the services described are partially funded by the federal Workforce Innovation and Opportunity Act (WIOA) award from the U.S. Department of Labor, System of Virginia Community Colleges. The West Piedmont Workforce Investment Board and sub-recipients are equal opportunity employers / programs. Auxiliary aids and services are available upon request for people with disabilities.

FastForward Credential

AUTOMATION AND ROBOTICS LEVEL 1

The Automation and Robotics program provides an introduction to industrial robotics and explains how they are used in automated systems. Students must co-enroll in Siemens Mechatronic Systems Certification Program Level 1 and Festo Industry 4.0 Certification Program Level 1: Industry 4.0 Fundamentals, offering an opportunity to earn two industry-recognized credentials.

The Festo Industry 4.0 Certification Program Level 1 course introduces students to the fundamental skills related to pursuing a career in Advanced Manufacturing. This is the foundation needed to understand future topics. At FI4.0CP level 1, certified students will be well-rounded machine operators/ technicians, with responsibility for efficient operation of the equipment. They will ensure that the system is running at maximum capacity with an understanding of the role of each component and device. They can identify malfunctions and make minor repairs.

Upon successful completion of this course, students will have the opportunity to earn the National Coalition of Certification Centers (NC-3) Festo Industry 4.0 Certification Program Level 1: Industry 4.0 Fundamentals and the Siemens SMSCP (Mechatronics) Level 1 certifications.

\$4,200 Full Price, **\$1,400 FastForward Price**

Mon & Wed, Aug. 26-Dec. 18

5:30-9:00 PM



HELD AT THE MET



OSHA 10 FOR GENERAL INDUSTRY

This 10-hour Occupational Safety and Health Administration (OSHA) outreach training program is targeted to entry level workers and covers general industry safety and health hazards.

Topics include: Introduction to OSHA, Walking and Working Surfaces, Emergency Action Plans and Fire Prevention/ Protection, Electrical Safety, Personal Protective Equipment, and Hazard Communication. At least two additional topics from a list of electives will be covered.

Participants will receive:

- Instruction from authorized OSHA Outreach trainers.
- Certification card upon successful completion of training and final exam (OSHA student completion cards do not expire per OSHA requirements).

\$80

For information, call 276-656-0260.

OSHA 30 FOR GENERAL INDUSTRY

The 30-hour Occupational Safety and Health Administration (OSHA) Outreach Training Program for General Industry is targeted to supervisors or workers with some safety responsibility. Through this training, OSHA helps to ensure that workers are more knowledgeable about workplace hazards and their rights and contribute to our nation's productivity.

Participants will receive:

- Instruction from authorized OSHA Outreach trainers.
- Certification card upon successful completion of training and final exam.

\$295

For information, call 276-656-0260.

FastForward Credential

POWER LINE WORKER PROGRAM

Using curriculum from the National Center for Construction Education and Research, the Power Line Worker curriculum addresses the fundamental aspects of power line work to ensure workers maintain safety for both the public and electrical crews. Power Line workers install, remove, maintain, and repair high-voltage and low-voltage distribution lines and associated equipment and facilities.

Training topics include:

- Truck Driving
- Safety
- Electrical Theory
- Climbing Techniques
- Aerial Framing
- Rigging
- Operating Utility Service Equipment

HS diploma or GED not required.

In partnership with Wytheville Community College.

\$14,100 Full Price, **\$4,700 FastForward Price**



Mon-Thurs, Aug. 29-Dec. 12 7:00 AM-6:00 PM

HELD AT THE PATRICK COUNTY SITE



CONTINUING EDUCATION FOR TRADESMAN

This online tradesman license renewal course provides a flexible, cost-effective option to renew your tradesman license. Covers new definitions, code changes, general requirements, impacts on the job, general use and special equipment included in the respective codes.

Within 72 hours of receiving your online registration and payment for this class, you will receive an email from your instructor with your course login information, and you may begin taking the course. There is no time limit to complete the course – you may take days or even weeks. There is, however, a MINIMUM time limit. You must be logged in for a total of 3 clock hours; however, it does not have to be 3 continuous hours. The system will keep track of the total time you are logged into the class. The last question of the test will remain locked until the minimum time requirement has been met.

Open Entry / Open Exit / Self-Paced Online Tutorial
3 Months Access / 3 Contact Hours Minimum

ELECTRICIAN	\$45
GAS FITTER	\$25
PLUMBER	\$45
HVAC TECHNICIAN	\$45

BASIC CONTRACTOR LICENSING COURSE

This eight-hour course provides a basic look at statutes and regulations governing contractor licensing in Virginia, including:

- Types of licenses available and qualifications for each
- Standards of practice
- Prohibited acts
- How to avoid violations

This course prepares participants for pre-licensure. It is intended for first-time applicants for a Class C, B, or A license and changing a business type. Upon successful completion, participants are provided a certificate of completion to be presented upon application for a contractor's license. This course does not prepare students for the contractor licensing exam.

\$189

Sat, Sept. 21 8:00 AM-4:30 PM

Sat, Nov. 16 8:00 AM-4:30 PM

ONLINE COURSES



**Polish your skills or begin
a new career from the comfort of
your own home!**

P&HCC offers a wide range of open enrollment online career credit courses and programs to meet the needs of our students. Select online workforce training programs may be eligible for funding assistance.

Our Partners include:

ed2go

Health Ed Today

ProTrain Online

Complete listing: ph.augusoft.net



INNOVATION & DESIGN

DESIGN A CUTTING BOARD USING THE CNC ROUTER

Discover your creative side while you design and customize your own cutting board with the Shopbot CNC Router. During this hands-on course, you will learn the basic steps of CNC production as well as computer design software.

Covered topics include safety, operations, software, materials, and project design best practices. Upon completion of the class, students will be certified to schedule time on the Shopbot for their own projects. No prior experience or technical knowledge needed.

\$104

Tues, Aug. 20-Sept. 10 5:30-7:30 PM
DALTON IDEA CENTER & PATRICK COUNTY FAB LAB

CREATE A PERSONALIZED WREATH USING THE LASER

Learn the basics of laser engraving while creating a personalized wreath! While using graphics software like Adobe Illustrator and Lightburn, students will design their wreath then cut, etch and engrave their designs. With this incredibly precise tool, the possibilities are endless!

Covered topics include safety, operations, software, materials, and project design best practices. Upon completion of the class, students will be certified to schedule time on the laser cutter for their own projects, and will know how to use this versatile modern tool to cut and engrave intricate designs.

\$104

Tues, Sept. 17-Oct. 8 5:30-7:30 PM
DALTON IDEA CENTER & PATRICK COUNTY FAB LAB

BUILD YOUR OWN CUSTOM ELECTRIC GUITAR

In this 8-week hands-on course, students learn to design and build your own electric guitar using the ShopBot Desktop Max CNC router. Students will learn woodworking, electronics, Computer-Aided Design (CAD) and manufacturing basics. Students will leave the class with a custom-designed guitar built with their own hands.

\$349

Thurs, Oct. 17-Dec. 12 (skip 11/28) 5:30-8:00 PM
DALTON IDEA CENTER

FAB LAB: HOMESCHOOL CLASSES

INTRODUCTION TO 3D PRINTING- HOMESCHOOL EDITION!

Specially designed for homeschool students! Discover the creative phenomenon that is sweeping the world - 3D Printing! During this introductory course, participants will gain an understanding of 3D design and printing fundamentals in a fun and easy way. You won't believe the amazing things you can do.

Covered topics include safety, operations, software, materials, and project design best practices. Upon completion of the class, students will be certified to schedule time on the 3D printers for their own projects. No prior 3D printing experience or technical knowledge needed.

\$35

Tues, Sept. 10-Oct. 1 10:00-11:30 AM
DALTON IDEA CENTER

3D PRINTING ARCHITECTURE

Students will use 3D modeling software, TinkerCAD, to design miniature versions of famous architecture and will then 3D print their designs.

\$15

Wed, Oct. 23 9:00 AM-12:00 PM
DALTON IDEA CENTER & PATRICK COUNTY FAB LAB

CUSTOMIZED PICTURE FRAME USING THE LASER

Students will be using the laser to customize and create their own picture frame while learning the basics of laser.

\$15

Wed, Dec. 18 9:00 AM-12:00 PM
DALTON IDEA CENTER & PATRICK COUNTY FAB LAB

FAB LAB LOCATIONS:

P&HCC Dalton IDEA Center
26 Fayette Street
Martinsville, VA 24112

P&HCC Patrick County Fab Lab
212 Wood Brothers Drive
Stuart, VA 24171

FAB LAB FAMILY DAYS

Join us for a fun, hands-on activity for the entire family in the Fab Lab! Each month we will have a featured activity to allow individuals and families the opportunity to learn fun and creative things you can do in the Fab Lab. No experience or technical knowledge needed.

DIY STICKERS!

In September, participants will be using the vinyl cutter to create unique, custom designed stickers!

\$15

Sat, Sept. 7 10:00 AM-12:00 PM
PATRICK COUNTY FAB LAB

Sat, Sept. 14 10:00 AM-12:00 PM
DALTON IDEA CENTER

ETCH YOUR OWN TUMBLER

In October, participants will be using the laser to etch unique and custom designs on their own tumbler.

Tumbler included.

\$20

Sat, Oct. 5 10:00 AM-12:00 PM
PATRICK COUNTY FAB LAB

Sat, Oct. 12 10:00 AM-12:00 PM
DALTON IDEA CENTER

CUSTOMIZED T-SHIRTS!

In November, create your own custom designed t-shirt. Bring your own t-shirt.

\$15

Sat, Nov. 2 10:00 AM-12:00 PM
PATRICK COUNTY FAB LAB

Sat, Nov. 9 10:00 AM-12:00 PM
DALTON IDEA CENTER

DIY ORNAMENTS

In December, participants will be using the laser cutter to create unique, custom designed Christmas ornaments.

\$15

Sat, Dec. 7 10:00 AM-12:00 PM
PATRICK COUNTY FAB LAB

Sat, Dec. 14 10:00 AM-12:00 PM
DALTON IDEA CENTER



PERSONAL ENRICHMENT

PHOTOGRAPHY

DIGITAL PHOTOGRAPHY: BASICS AND BEYOND

Certified Professional Photographer Rick Dawson will show you the basics of digital photography in this fun, hands-on class. Students will learn to harness the full potential of their camera and/or smartphone. In this workshop, students will unlock the array of features that can significantly enhance the quality of their images. They will learn to utilize the grid on both their camera and/or smartphone and maximize the resolution for stunning results.

\$60

Thurs, Sept. 19-Oct. 3 6:00-8:00 PM
WALKER 135

DANCE

POPULAR PARTY LINE DANCE

Join Sue-Ann Ehmann as she teaches you your favorite "Party" dances like the Cupid Shuffle, Electric Slide, Wobble, Cha Cha Slide, Biker's Shuffle, and more! Line dance is a proven stress reliever and an excellent way to fit exercise and fitness into your life.

\$35

Wed, Sept. 25-Oct. 23 11:00 AM-12:00 PM
STONE HALL 103

TRANSPORTATION

MOTORCYCLE BASIC RIDER COURSE

Get classroom and motorcycle operator training under controlled range conditions! Riders learn basic motorcycle operation, effective braking, obstacle avoidance, and safe riding strategies. The BRC prepares the rider for state licensing.

NEW PROGRAM INFORMATION:

This course includes a 5-hour self-paced online learning portion that must be completed prior to attending the motorcycle operation training. Students will be emailed a link to complete the coursework approximately two (2) weeks before the first class session. Students are required to bring the certificate of completion to the first class session. If the certificate is not presented, the student will be dropped from the class and ineligible for a refund.

Students must have a valid driver's license or learner's permit, sturdy shoes high enough to cover the ankle, full fingered gloves, long pants without holes in the legs, and eye protection. Motorcycles (none larger than 500 cc) and helmets are provided for this program. If you choose to bring your own helmet, it must be at minimum, a 3/4 shell, DOT approved helmet. No skull or half helmets permitted.

\$150

Sat & Sun, Sept. 7-8 Sat & Sun, Oct. 5-6
Sat & Sun, Sept. 21-22 Sat & Sun, Oct. 19-20

8:00 AM-2:00 PM
HENRY COUNTY PUBLIC SAFETY CENTER



FastForward Credential

COMMERCIAL DRIVER'S LICENSE

The CDL: Class A (E Restriction - Automatic Shift) Truck Driver Training curriculum teaches students how to inspect and operate tractor trailers and to assume driver responsibilities on the road and at pickup/delivery points. This program prepares students to sit for the Virginia CDL examination.

Curriculum Requirements: Students must have a valid Virginia Driver's License, obtain a valid Medical Examiner's Certificate by passing a DOT Physical, apply for and pass a Class A Commercial Learner's Permit (CLP) at your local DMV office, and obtain a DOT drug screen with negative results prior to the start of the program.

[Ask about TARE!](#)

FULL-TIME CLASSES

Mon-Thurs, Aug. 19-Sept. 12 7:00 AM-5:30 PM
Mon-Thurs, Sept. 16-Oct. 10 7:00 AM-5:30 PM
Mon-Thurs, Oct. 14-Nov. 7 7:00 AM-5:30 PM
Mon-Thurs, Nov. 12-Dec. 6 7:00 AM-5:30 PM
Mon-Thurs, Dec. 9-Jan. 3, 2025 7:00 AM-5:30 PM

PART-TIME CLASSES

Sat & Sun, Oct. 5-Nov. 24 7:00 AM-5:30 PM
Sat & Sun, Nov. 30-Jan. 19, 2025 7:00 AM-5:30 PM
Training provided by Ancora Education.

FastForward Credential

COMMERCIAL DRIVER'S LICENSE: CLASS B DRIVER TRAINING

The CDL Training: Class B driver training curriculum provides students with training to inspect and operate tractor-trailers and to assume driver responsibilities on the road and at pickup/delivery points. Emphasis is placed on vehicle inspections, defensive driving, range maneuvers, motor carrier safety regulations (DOT 380-397 and a certificate for entry-level drivers), trip planning, cargo handling, size/weight laws, general maintenance procedures, hours of service, and accident prevention.

Curriculum Requirements (must be obtained and provided to Ancora Training prior to the first class session):

- Valid Virginia Driver's License.
- Valid Medical Examiner's Certificate by passing a DOT physical.
- Class A Commercial Learner's Permit (CLP).
- Consists of 3 tests: General Knowledge, Air Brakes, and Combination (can be taken in 1-3 sessions).
- Manual available at DMV to prepare for CLP.
- Mobile prep apps include "CDL Prep" and "CDL Test".
- DOT drug screen with negative results.
- Driving record from DMV for the last 5 years

Mon-Thurs, Sept. 3-19 7:00 AM-5:30 PM
Mon-Thurs, Sept. 30-Oct. 17 7:00 AM-5:30 PM
Mon-Thurs, Oct. 28-Nov. 14 7:00 AM-5:30 PM
Mon-Thurs, Nov. 25-Dec. 12 7:00 AM-5:30 PM
Training provided by Ancora Education.



CAREER CENTER

AT PATRICK & HENRY COMMUNITY COLLEGE



Visit our P&HCC Career Center Facebook page for local employment opportunities!

WHAT WE OFFER:

- Resume building & cover letter writing
- Job referrals & leads
- Career guidance
- Job prep workshops
- Internship listings
- Mike Rowe Works (MRW) Work Ethic Certification
- News about career events & job fairs
- Credential testing
- Job listings from local employers

WHERE TO FIND US:

Walker Building, Room 203

Office Hours: Monday-Friday, 8:00 AM-5:00 PM

Contact Us: 276-656-0209 or 276-656-5483
careercenter@patrickhenry.edu

WORKFORCE, ECONOMIC & COMMUNITY DEVELOPMENT STAFF

Rhonda Hodges
Vice President of Workforce,
Economic & Community
Development
276.656.0256
rhodges@patrickhenry.edu

Monica Hatchett
Director of Public Relations &
Marketing
276.656.0259
mhatchett@patrickhenry.edu

Kaylyn Gary
FastForward/G3 Career Coach
276.656.0359
kgary@patrickhenry.edu

Lillie Gibson
Executive Assistant
276.656.0204
lgibson@patrickhenry.edu

Ellen Hairston
Workforce Grant Advisor
276.656.5465
ehairston@patrickhenry.edu

Rachel McConnell
Healthcare Hybrid Faculty
540.483.0179 ext. 2127
rmcconnell@patrickhenry.edu

Lisa Parnell
Workforce Development
Support Specialist
276.656.0342
lparnell@patrickhenry.edu

JC Hazelwood
Career Services Coordinator
276.656.5483
jhazelwood@patrickhenry.edu

Shelira Morrison
Director of Workforce Development
276.656.5464
smorrison@patrickhenry.edu

Le'Bryan Patterson
RISE Community Business
Navigator
276.656.0343
mpatterson@patrickhenry.edu

Desmond Prillaman
Workforce Advising and Coaching
Specialist
276.656.0267
dprillaman@patrickhenry.edu

Jennifer Puckett
Patrick County Fab Lab Technician
276.656.0455
jpuckett@patrickhenry.edu

Amy Reed
Marketing & Community
Development Specialist
276.656.5461
areed@patrickhenry.edu

Tanya Sprinkle
Workforce Advising Specialist
276.656.0347
tsprinkle@patrickhenry.edu

Matthew Ratliff
Coordinator of Community
Development Programs
276.656.5479
mratliff@patrickhenry.edu

Shannon Whitlow
Coordinator of Workforce
Advising & Coaching
276-656-0354
swhitlow@patrickhenry.edu

Terrence Strickland
FastForward and Technical
Studies Advisor
276.656.0310
tstrickland@patrickhenry.edu

Kaitlin Stovall
Graphic Designer/
Social Media Manager
276.656.5478
kbryant@patrickhenry.edu

Christopher Wagoner
Fab Lab Technician
276.656.5474
cwagoner@patrickhenry.edu

Regina Warren
Career Services Support
Specialist
276.656.0209
rwarren@patrickhenry.edu

Amanda Wikstrom
IT/Industry 4.0 Faculty
276-656-0251
awikstrom@patrickhenry.edu

CAREER CREDIT REGISTRATION

WORKFORCE, ECONOMIC & COMMUNITY DEVELOPMENT



Completed application and payment should be submitted at least one week prior to the start date of the class(es). Course cancellations must be made at least 48 business day hours prior to class meeting to obtain a full refund or transfer tuition to another class.

Policies for programs leading to an industry certification are different.

FIVE convenient ways to register...

ONLINE REGISTRATION: ph.augusoft.net

BY PHONE: (276) 656-0260

BY FAX: (276) 632-1963

IN PERSON

Frith Building, Rooms 104-112

Office Hours: Monday-Friday, 8:00 AM-5:00 PM

BY MAIL

P&HCC, Workforce Development

645 Patriot Avenue

Martinsville, VA 24112

Note: For your security, please do not email your personal information.

Our application is located online at ph.augusoft.net. First, click on Browse, then click on Registration to access our application.

We accept cash, check, money order, VISA, Discover, or MasterCard.

Make checks payable to P&HCC.

