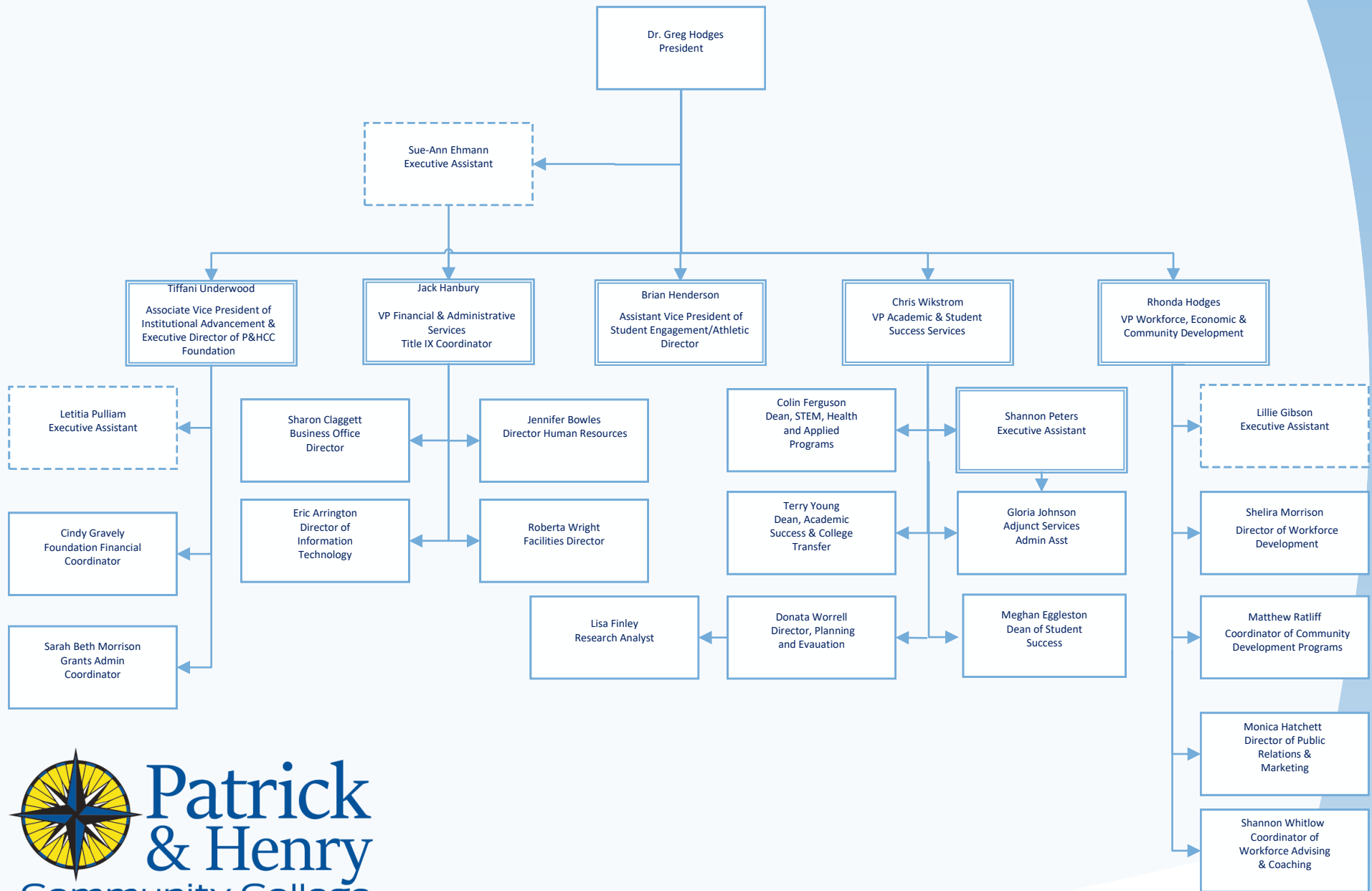


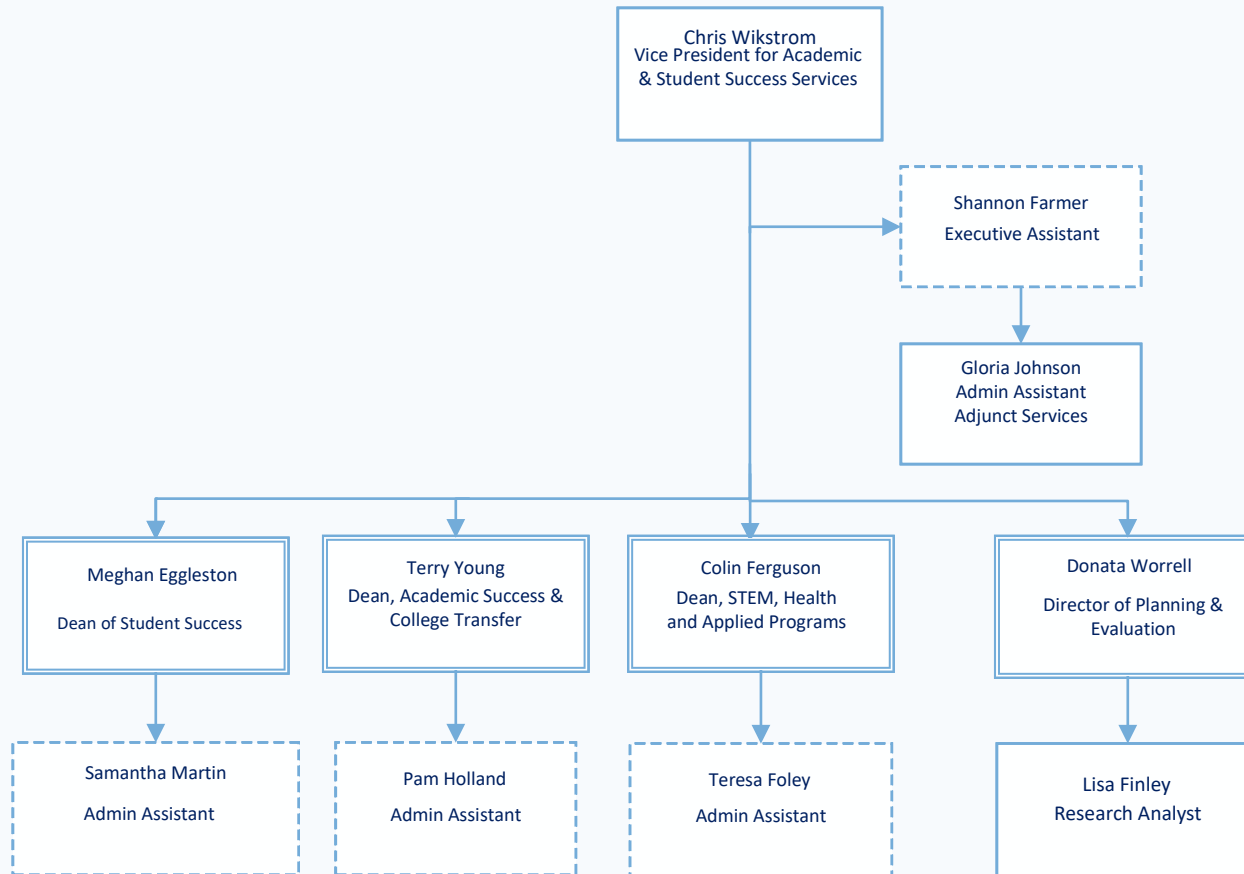
# ORGANIZATIONAL CHART

Spring 2025



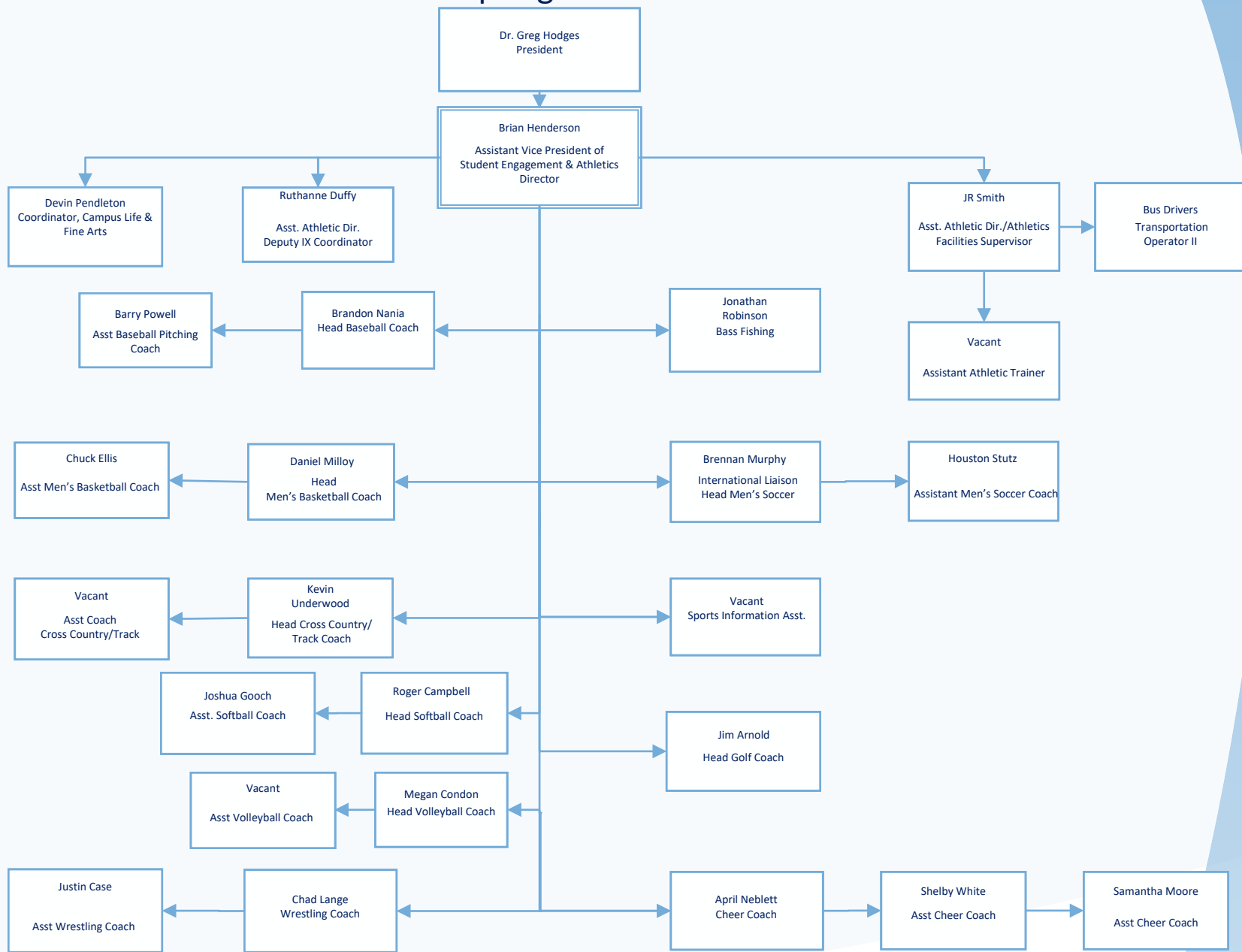
# Academic and Student Success Services

Spring 2025



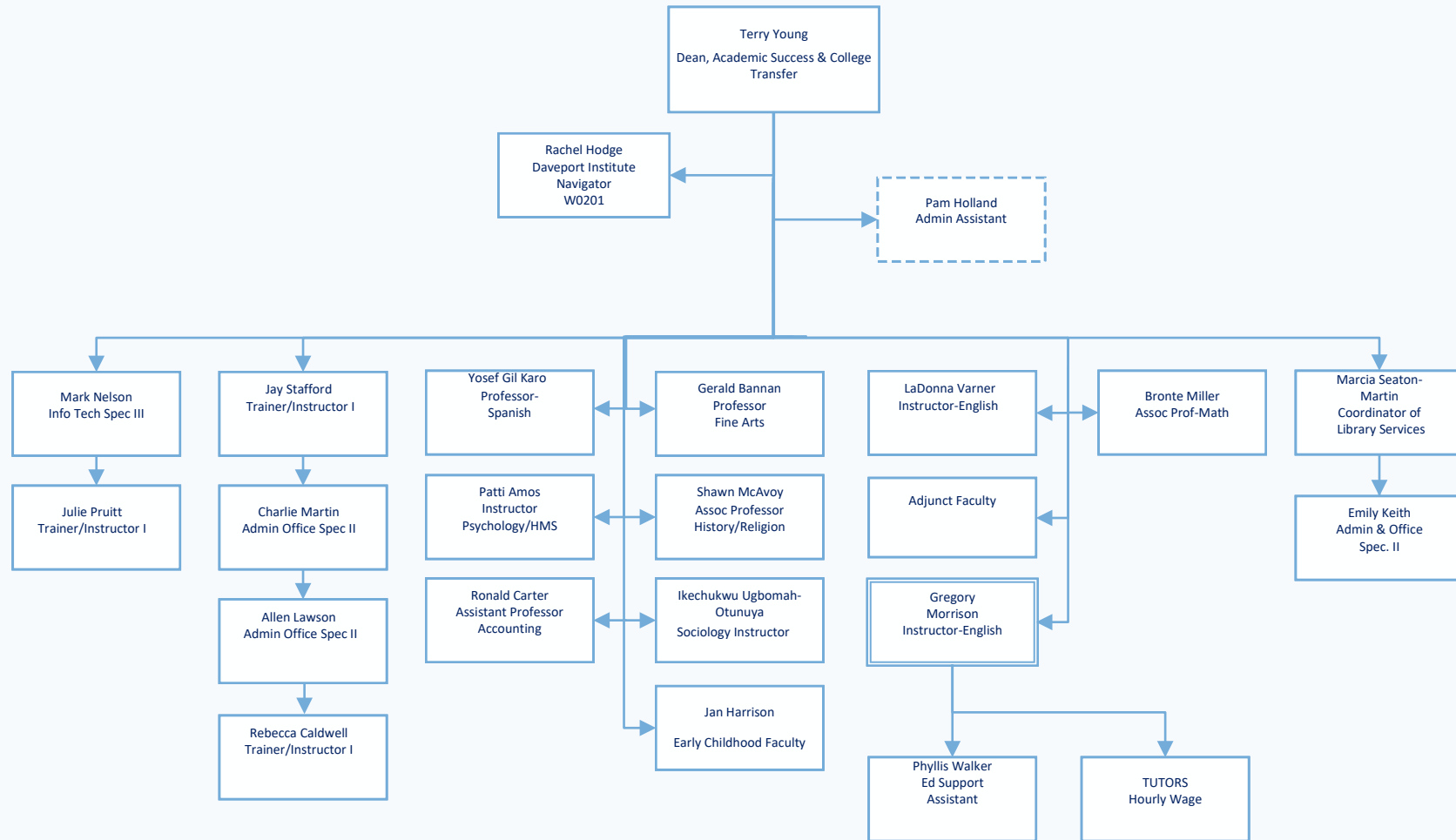
# Athletics

## Spring 2025



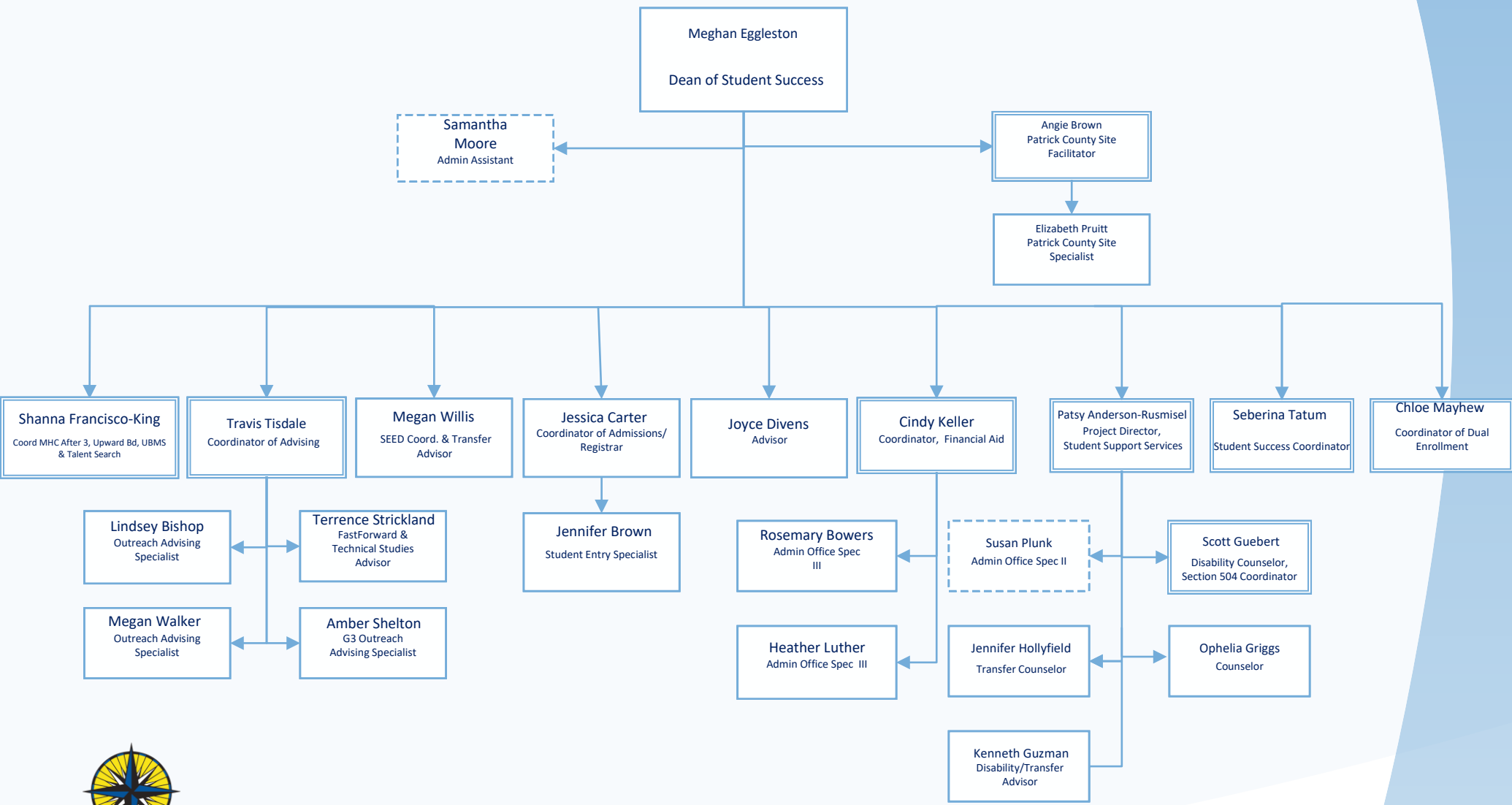
# Division of Academic Success & College Transfer

Spring 2025



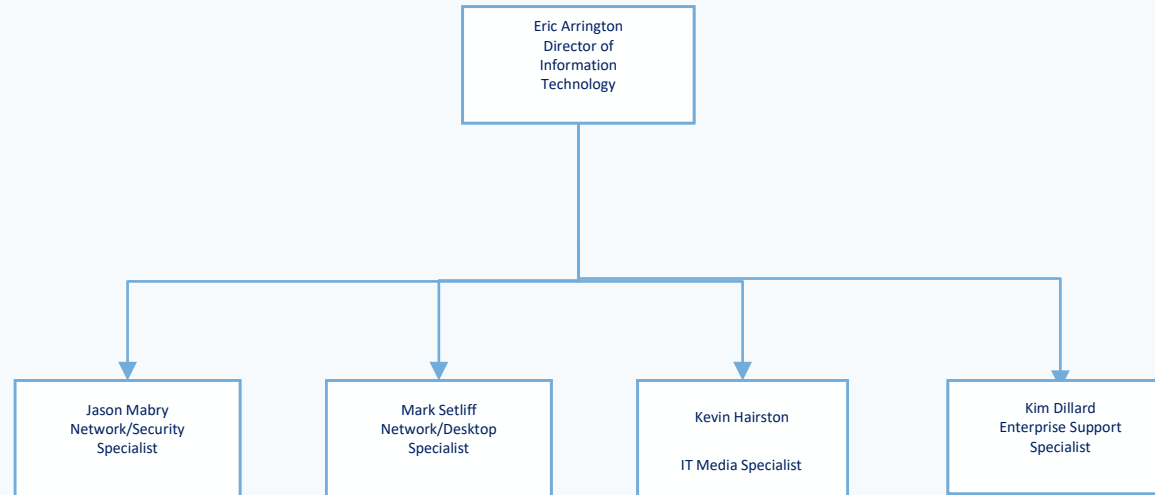
# Division of Student Success

Fall 2024



# Information Technology

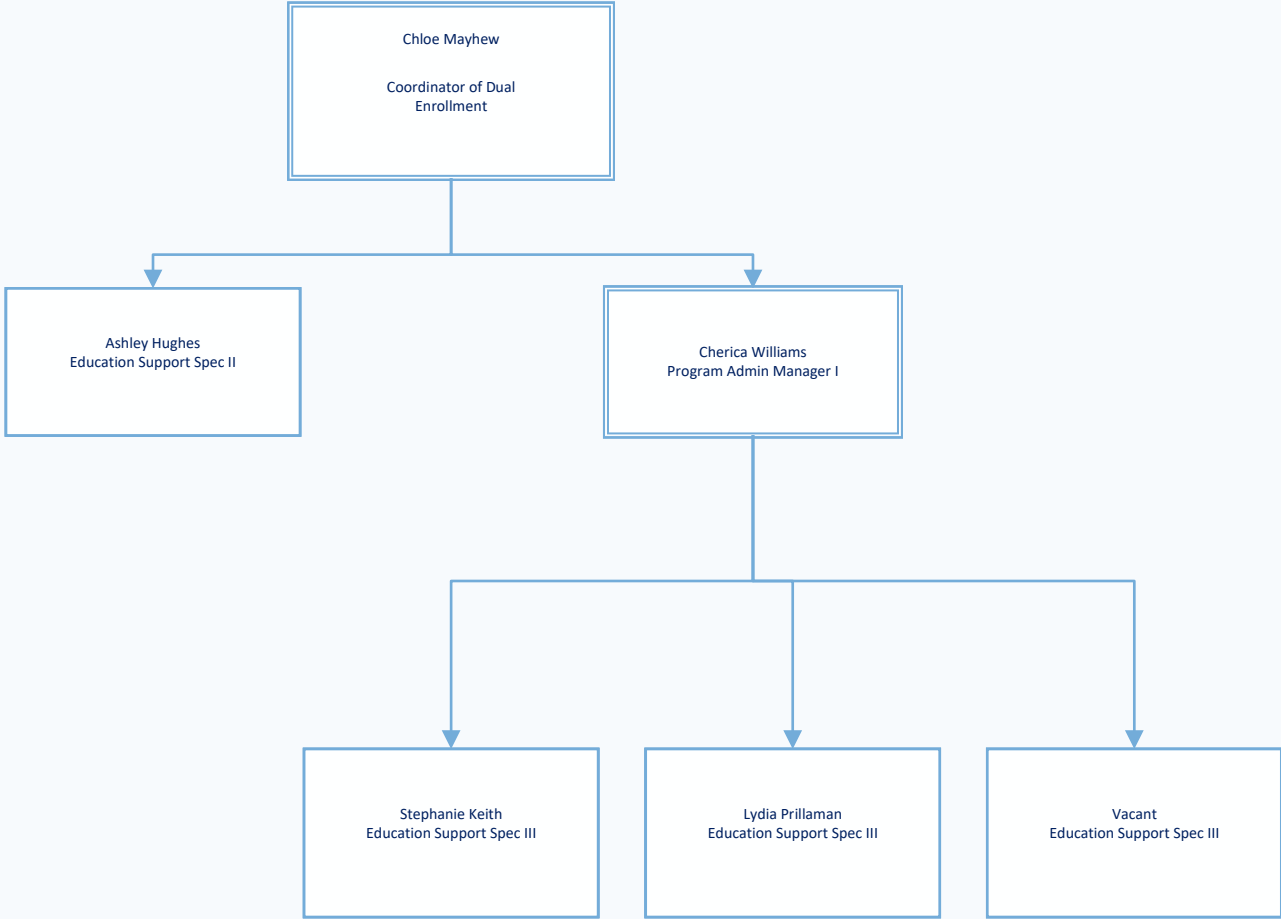
Spring 2025



Patrick  
& Henry  
Community College

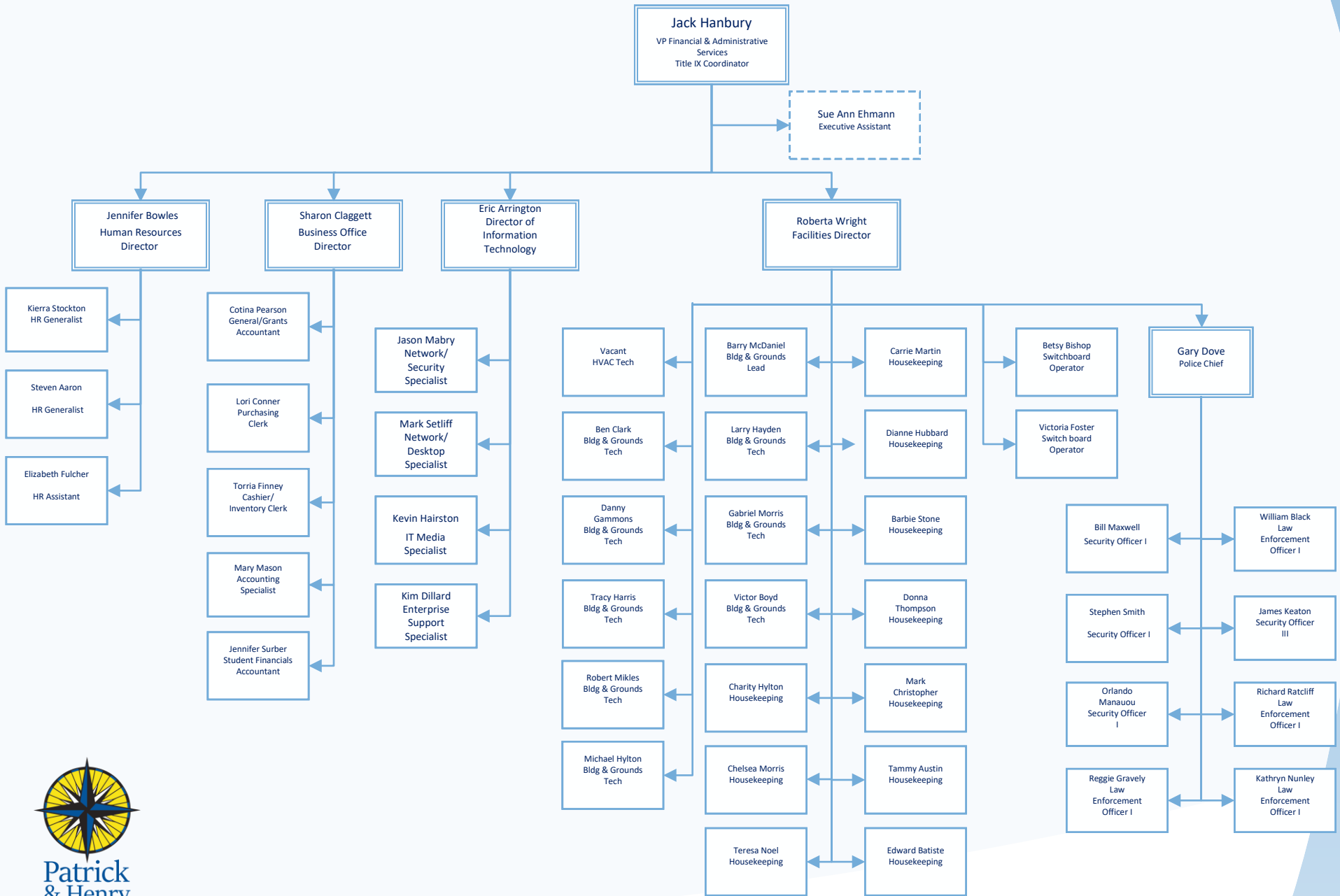
Revised 01/2025

# Dual Enrollment Spring 2025



# Financial and Administrative Services

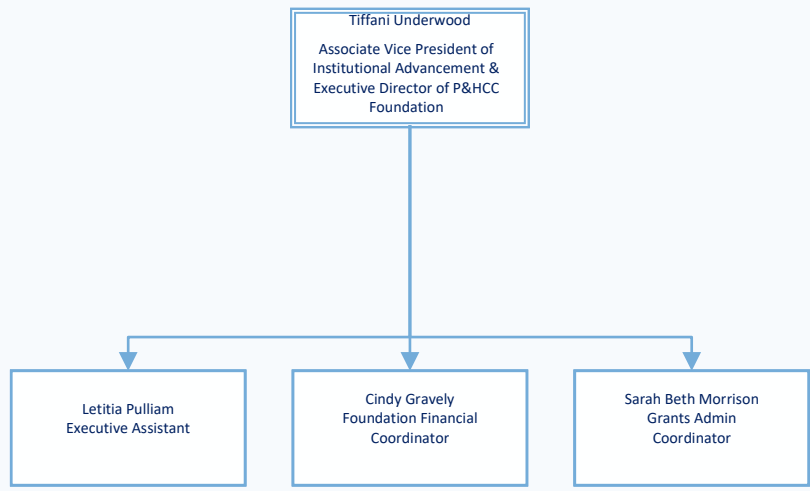
Spring 2025



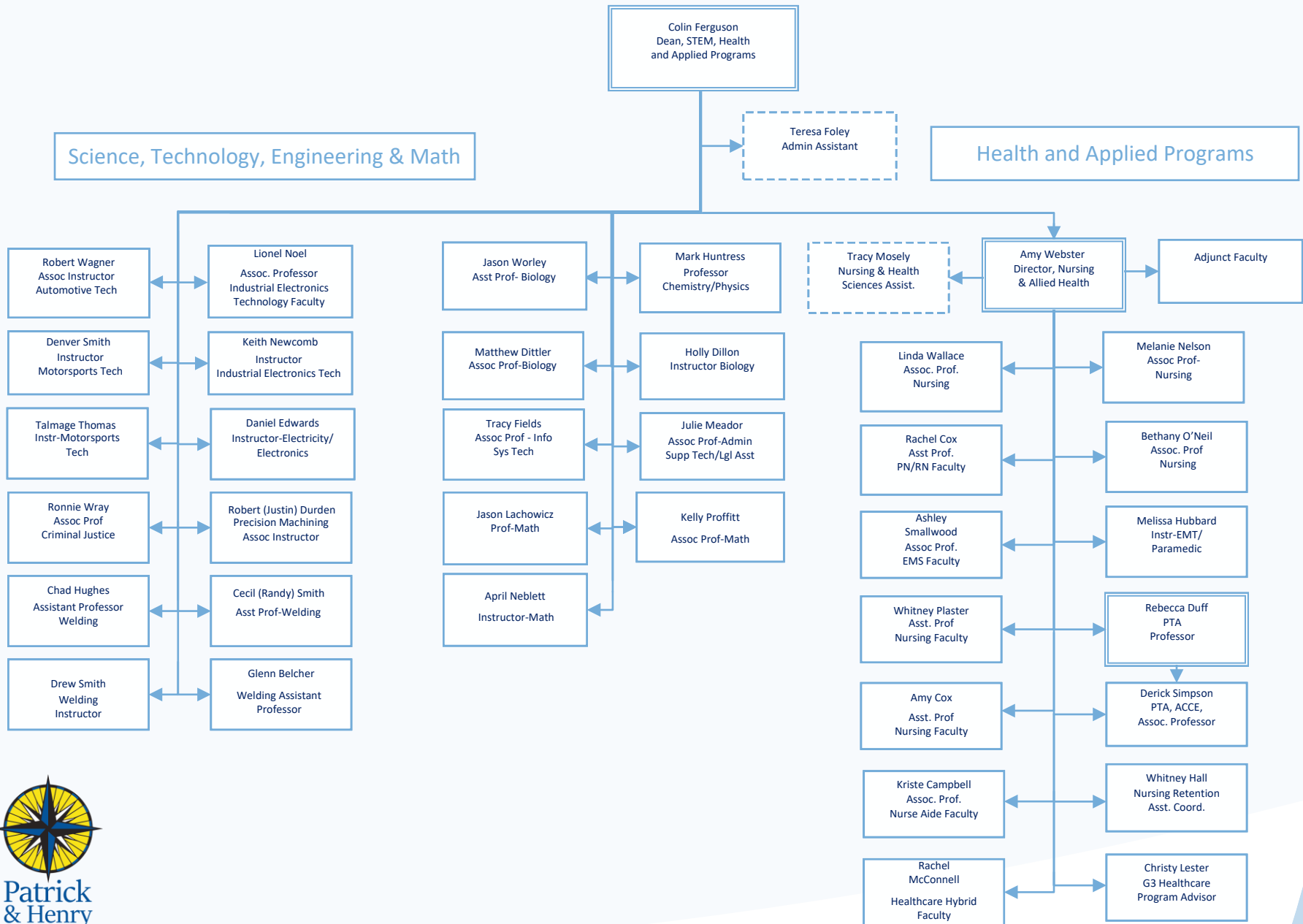


# Institutional Advancement

Spring 2025

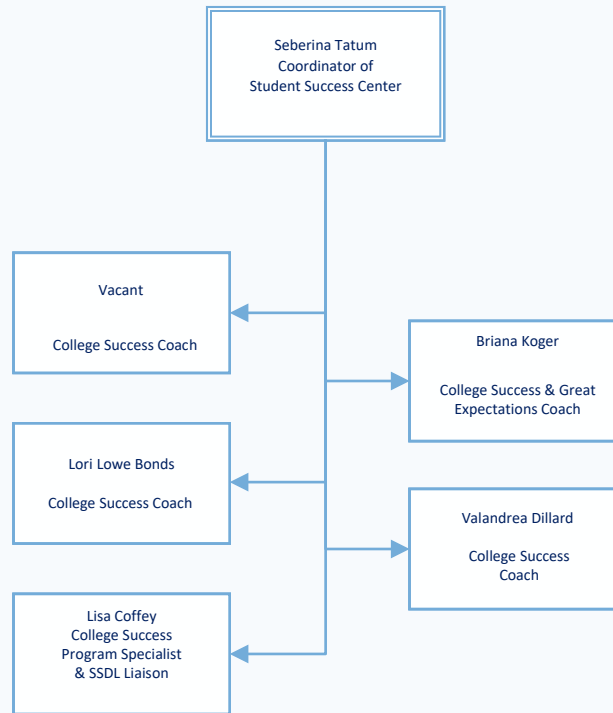


Division of Science, Technology, Engineering, Math - Health and Applied Programs  
Spring 2025



# Student Success Center

Spring 2025

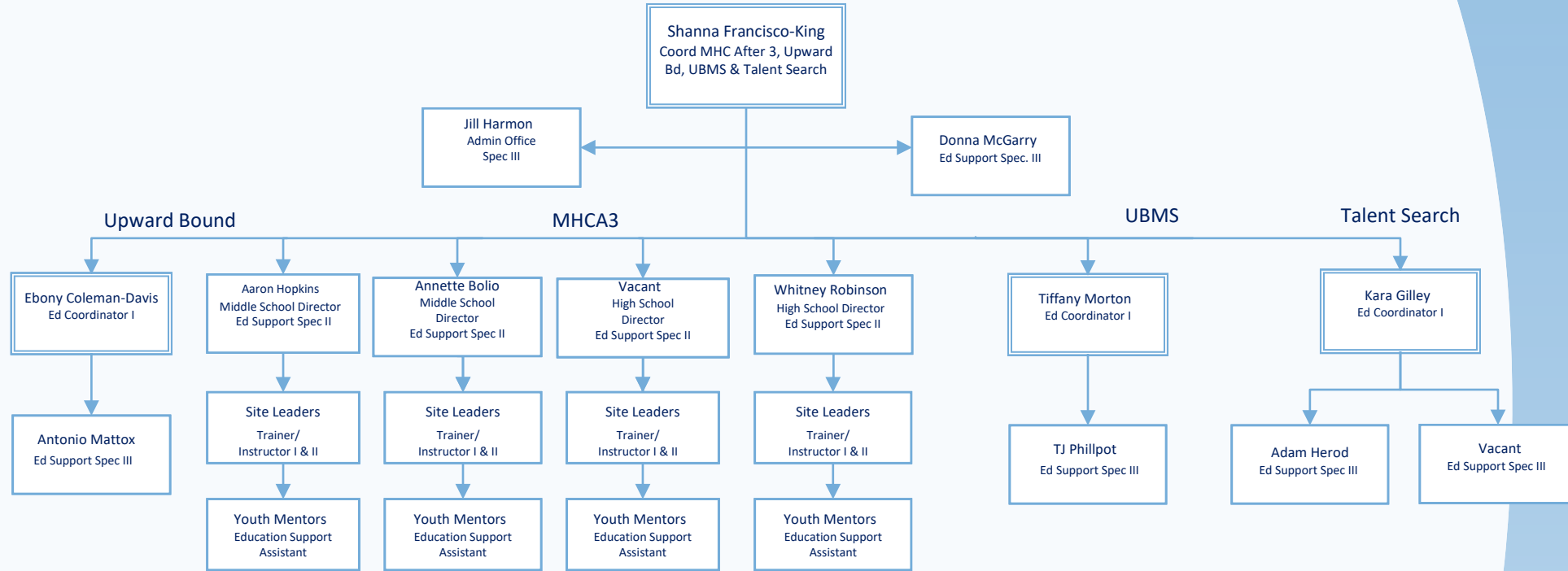


**Patrick  
& Henry**  
Community College

Revised 01/2025

# MHC After 3, Upward Bound, UBMS, & Talent Search

Spring 2025

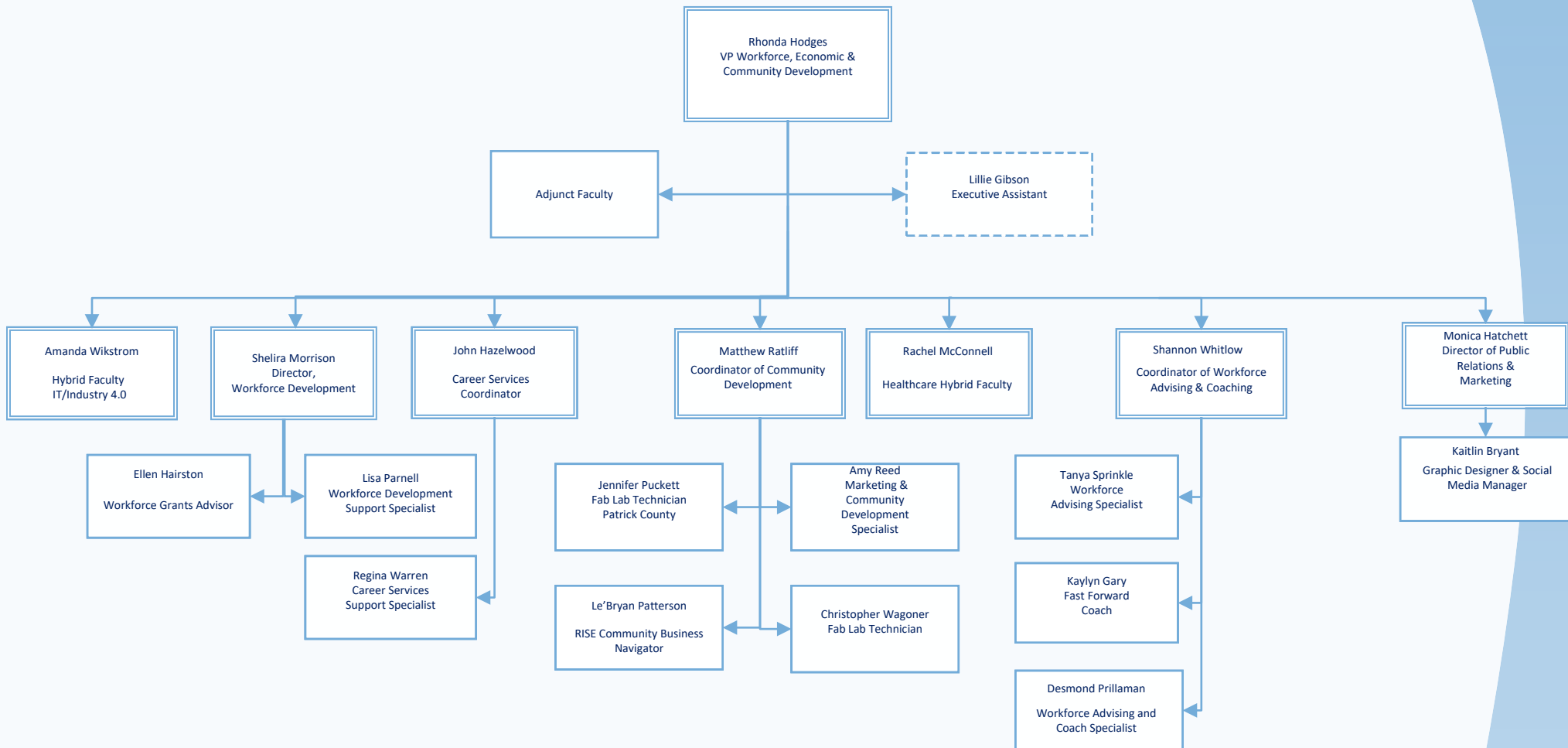


Patrick  
& Henry  
Community College

Revised 01/2025

# Workforce, Economic and Community Development

Spring 2025



Patrick  
& Henry  
Community College

Revised 01/2025